

C 24-258

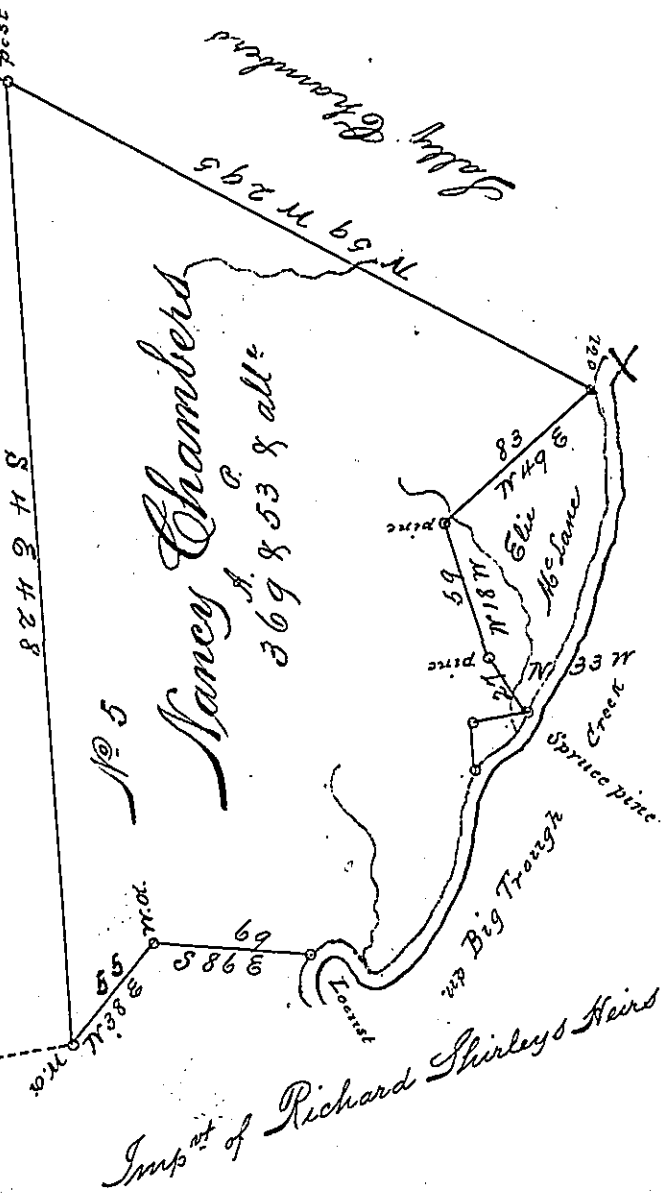
The Courses & Distances  
up the Creek from the Locust  
to the Spruce pine

- N 62 E 10 1/2
- S 55 E 17
- S 36 E 10
- N 33 E 55
- N 13 E 48
- N 2 W 19
- N 78 E 22

181 1/2 in all to Spruce pine

C-37

James Chambers



C 34-158

Situate in Union Township Huntingdon County  
 containing Three Hundred and Sixty nine Acres  
 and the usual allowance for roads. Surveyed the  
 Nineteenth Day of May 1794. In pursuance of a  
 warrant in the name of Nancy Chambers. Dated  
 the Eighteenth Day of March 1794

To Daniel Brodhead Esq<sup>r</sup> S. G. John Canan D.S.

IN TESTIMONY that the above is a copy of the original remaining on file in the  
 Department of Internal Affairs of Pennsylvania, made con-  
 formably to an Act of Assembly approved the 16th day of  
 February, 1833, I have hereunto set my Hand and caused  
 the Seal of said Department to be affixed at Harrisburg, this

thirteenth day of June 1895

James W. Latta  
 Secretary of Internal Affairs.